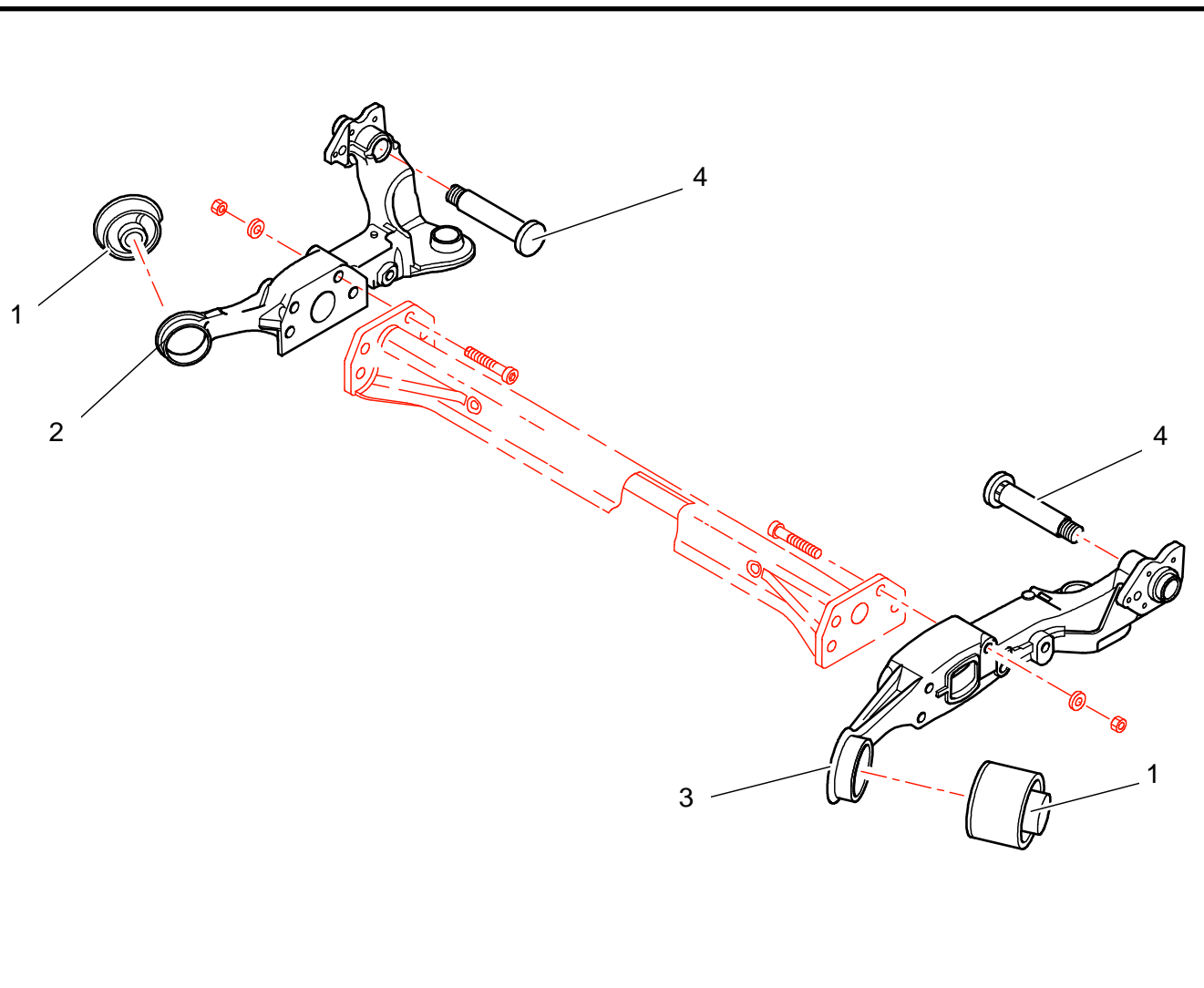
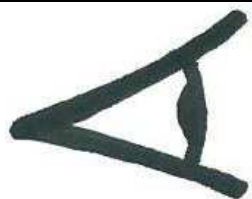


E22 : REAR ARMS


REF	PART NUMBER	QTY	DESCRIPTION
1	9642824080	2	Rear arm silent block (K = 230 daN)
2	9642627780	1	Right standard rear arm
3	9642627880	1	Left standard rear arm
4	9634567880	2	Standard rear wheel spindle
5			
6			
7			
8			
9			
10			
11			
12			
13			
14			
15			

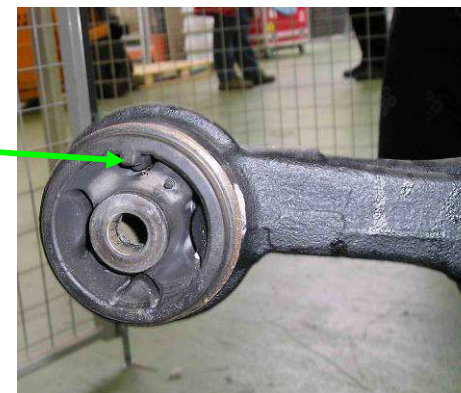
REAR ARM SILENT BLOCK ASSEMBLY



Find the right position of the silent block, before to shrink it into the arm :



Left rear arm, external view



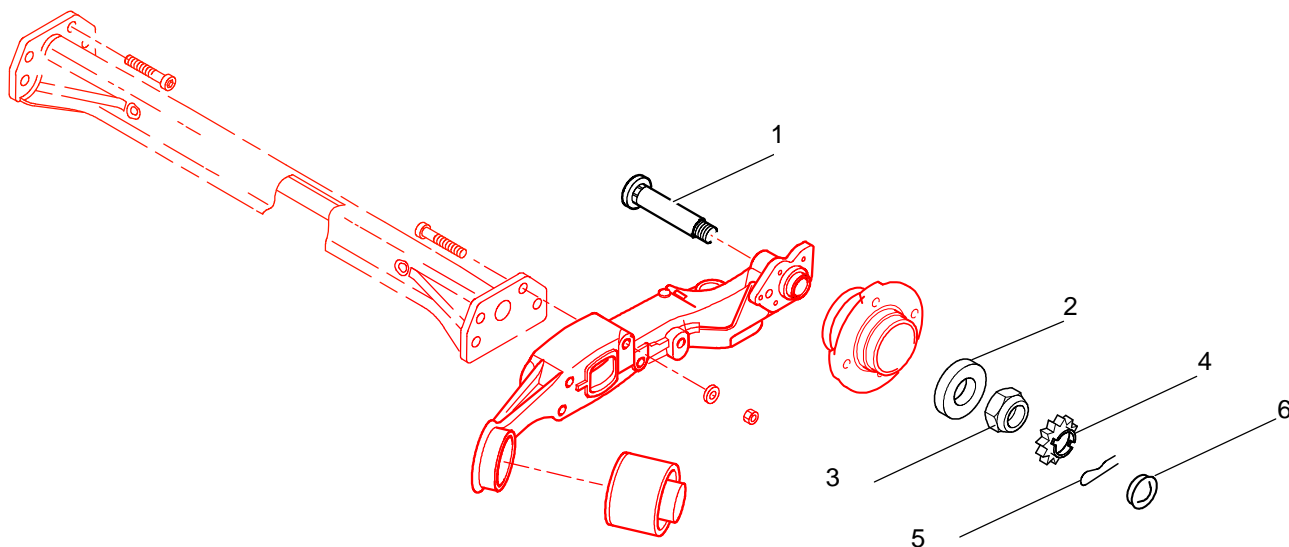
Right rear arm, inside view

When the car is at the correct ride height, drill a 6.75 mm hole throughout the tapped hole of the arm, to make a hole in the silent block.






The car still at the correct ride height, fit the M8 allen (Loctite 222 on thread) and torque it (the head of the screw has to be in contact with the arm, and the screw has to be inside (2mm max) the silent block).

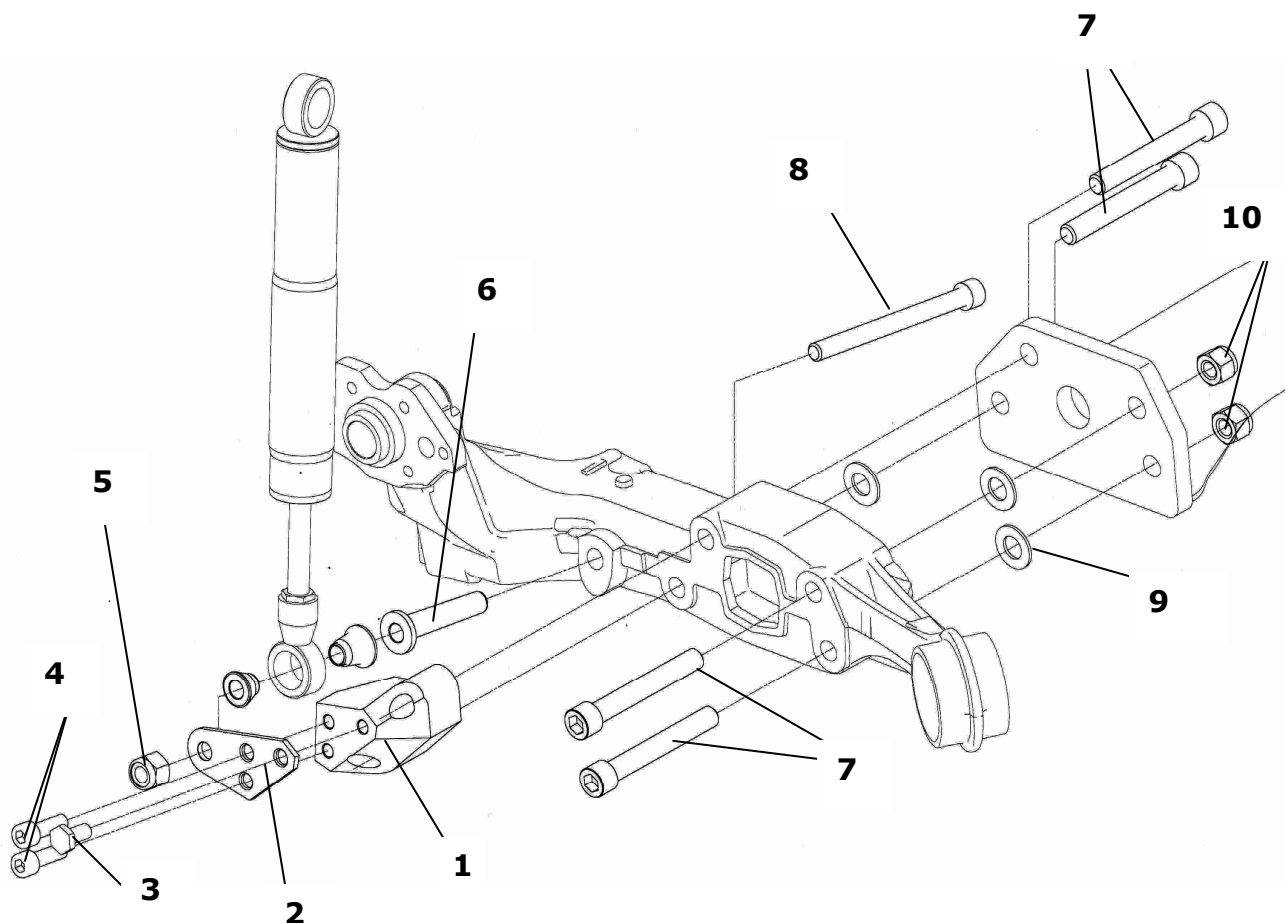
This way the silent block will never move inside the arm.

E22 : REINFORCED REAR WHEEL SPINDLE (OPTION)


REF	PART NUMBER	QTY	DESCRIPTION
1	1E2262561B	2	Reinforced rear wheel spindle
2	1E2262708A	2	Rear wheel spindle washer
3	BCSP329700	2	Rear wheel spindle nut
4	BCSP329702	2	Retainer
5	BCSP329703	2	Safety pin
6	1E2262626A	2	Rear wheel spindle Cap
7			
8			
9			
10			
11			
12			
13			
14			
15			

REINFORCED REAR WHEEL SPINDLE ASSEMBLY (OPTION)

	<p>The assembly of reinforced rear stub axle has to be done in a short time (before Loctite polymerizing). All parts needs to be ready to assembled before to start the job.</p>	
	<p>Apply generously Loctite N°648 on the rear side of the rear wheel spindle (on rear arm contact location), and fit it in the arm.</p>	<p>Loctite 648</p>
	<p>Assembly immediately the hub (without let polimerized the Loctite), and torque it to 20 m.kg</p> <p>Assembly the retainer, the pin and the cap.</p>	<p>20 m.kg</p>

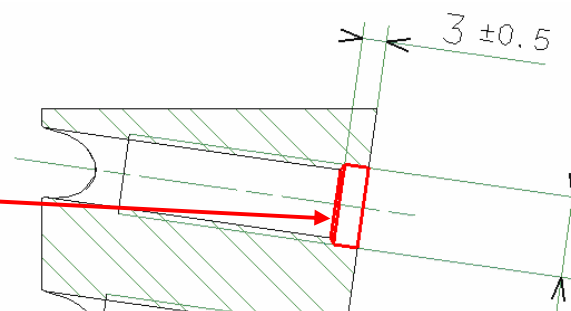
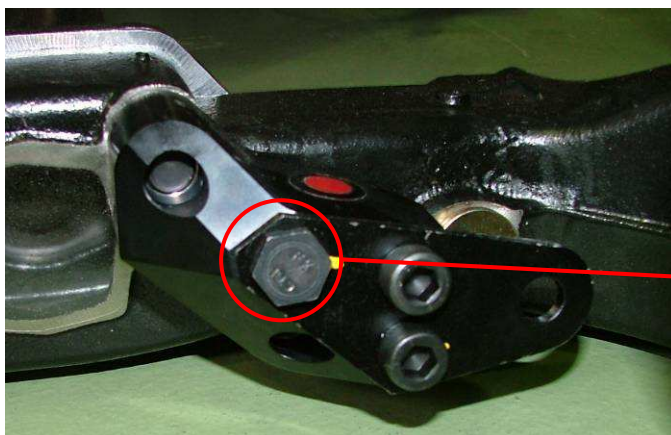
E22 : REAR ARMS


REF	PART NUMBER	QTY	DESCRIPTION
1	1E2262093B	1	Right rear shock bracket
1	1E2262094B	1	Left rear shock bracket
2	1E2262095B	2	Rear shock bracket plate
3	BCSP691489	2	M10 L20 flat head screw
4	PS82008A10	4	M10 L30 CI12.9 allen screw
5	CS250012ST	6	M12 self locking nut
6	1E2261010C	2	Shock / Arm spacer
7	CS530130ST	8	M14 L100 CI12.9 allen screw
8	CS530129ST	2	M12 L140 CI 12.9 allen screw
9	CS440035ST	6	ø28 thickness 0.1mm set ring
9	CS440036ST	12	ø28 thickness 0.2mm set ring
9	CS440037ST	6	ø28 thickness 0.5mm set ring
10	CS250013ST	4	M14 self locking nut
11			
12			

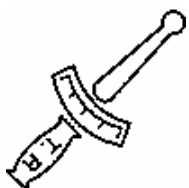
REAR ARM ASSEMBLY

!!!

As shown on the drawing below, left and right rear shock bracket has to be checked or modified, before the assembly on the arm.

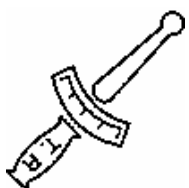


Ø10




Screw ref 8 torque

10 m.kg

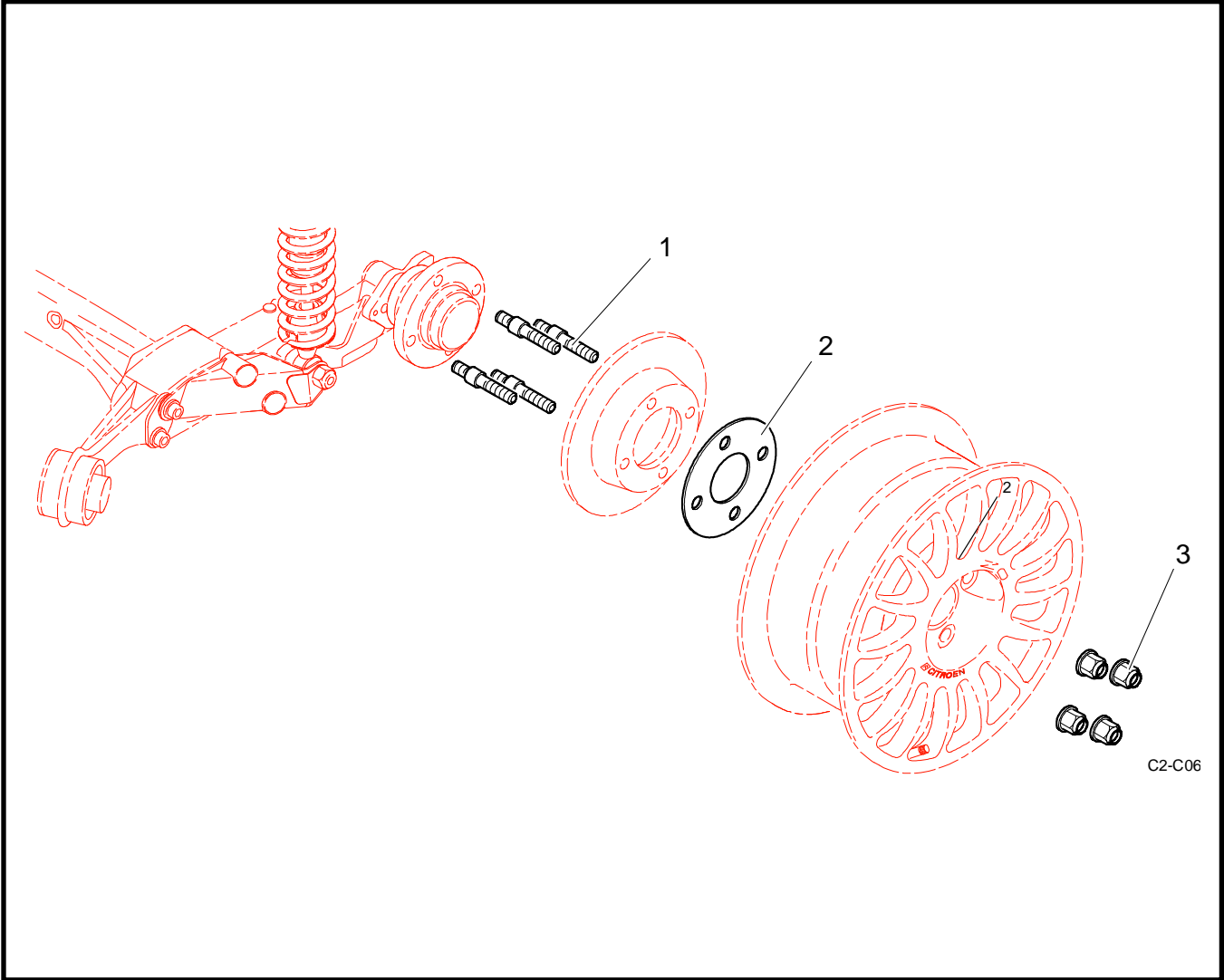


Screw ref 7 torque

**14 m.kg +
Loctite 242**



	<p>Screw <i>ref 3</i> torque</p>	<p>6 m.kg + Loctite 242</p>
	<p>Screw <i>ref 4</i> torque</p>	<p>6.5 m.kg + Loctite 242</p>

REAR HUB ASSEMBLY



REF	PART NUMBER	QTY	DESCRIPTION
1	1EXX23452A	8	L 65 wheel stud
1	1EXX23453A	8	L 85 wheel stud
2	1E1361135A	2	5 mm Wheel spacer
3	1EXX27791A	8	Wheel nut
4			
5			
6			
7			
8			
9			
10			
11			
12			
13			
14			

REAR HUB ASSEMBLY

	<p>Wheel stud torque</p> <p>L 65 mm = Tarmac</p> <p>L 85 mm = Gravel</p> <p>Apply some copper grease on threads, to nut location</p>	<p>11 m.kg + Loctite 242</p> <p>Copper grease</p>
	<p>Wheel nut torque</p>	<p>9 m.kg</p>